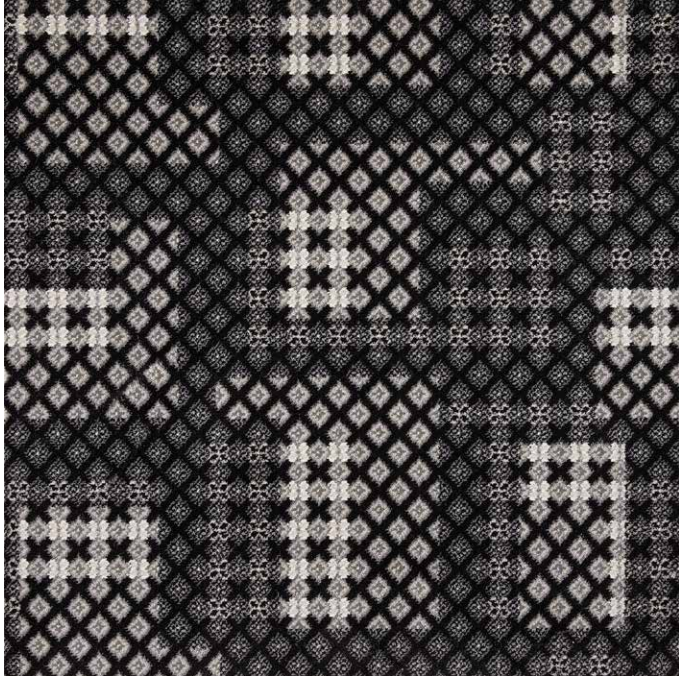


WOVEN 6039

balta
carpets



WOVEN 6039



▲ Woven 906039

Manufacturing process	Woven face-to-face Wilton	Number of points	ca. 240.000/m²
Pile content	100% PP Stainsafe®	Width	400 cm
Pile weight	ca. 1.320 gr/m²	Design Repeat	100 (W) x 78,4 (H) cm
Total weight	ca. 2.050 gr/m²	Light Fastness	5-6
Pile height	ca. 7,5 mm	Water resistance	4-5
Total height	ca. 10 mm	Characteristics	Heavy Domestic / Medium contract use
Shot density	50/10 cm	Thermal resistance	TOG : 1.3
Warp rate	34/10 cm	Installation	Underlay and gripper rods BS5325
Fire Class	BS4790 - Low Radius of Effects		

EN14041

CE

16

Balta Industries - Wakkensteenweg 2
BE - 8710 Sint-Baafs-Vijve

DOP: 1010#B00AEL

Textile Floor Covering EN1307

Efl
 DL
 NA
 PCP
 HCHO
 DS

www.baltamediabank.com

22

Efl

REG.NR AF6214F4
www.pro-dis.info



Onder voorbehoud van de wijzigingen van de technische specificaties - Kijk voor de uitgebreide garantievoorwaarden op www.stain-safe.com
 Sous réserve de modifications techniques - Pour le détail des conditions de garantie, rendez-vous sur www.stain-safe.com
 Unter Vorbehalt von Änderungen der technischen Daten - Detaillierte Garantiebedingungen finden Sie auf www.stain-safe.com
 All rights reserved to alter technical specifications - For detailed warranty conditions, see www.stain-safe.com

Wakkensteenweg 2, 8710 Sint-Baafs-Vijve, Belgium
 T +32 (0)56 62 22 11, info@baltagroup.com, www.baltagroup.com

